



ARCHITECTURAL DETAIL
corporation of logan

TEL:435.753-0800 FAX:435.755-0852 WWW.FIBERGLASSCOLUMNS.COM

PILASTER / HALF COLUMN INSTALLATION ©2007 Architectural Detail Corporation

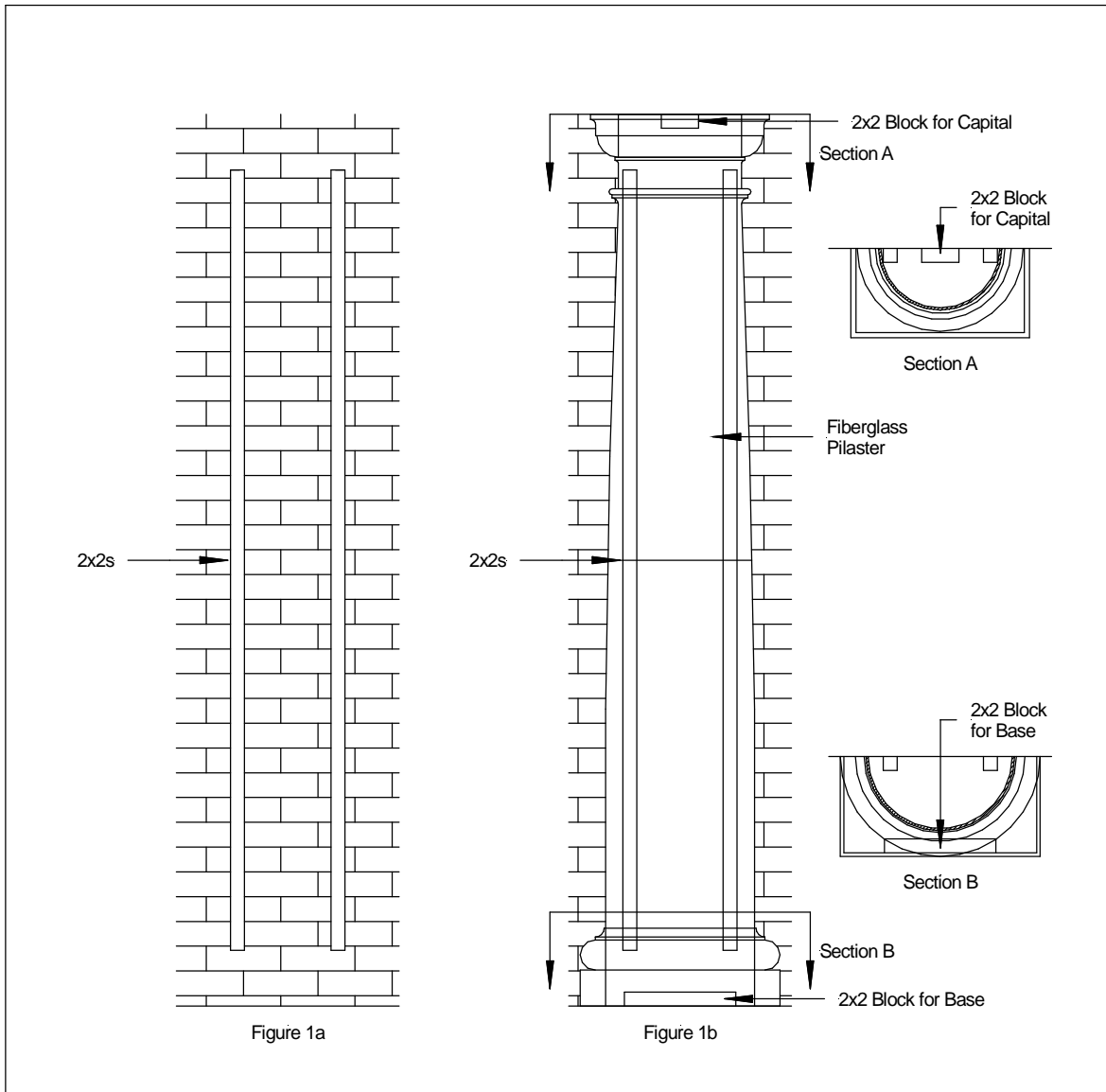
IMPORTANT NOTICE: If you are not going to be installing the columns immediately, place something underneath the ends so that one end is higher than the other. This allows air to pass beneath them, preventing moisture from damaging the paint primer on the columns.

Two types of installation for pilasters / half columns:

- 1) Regular, self-centering gussets are built-in to each pilaster.
- 2) Quick, a steel frame is included with each pilaster.

Type (1) installation (Regular):

- **Step 1:** Each pilaster has self-centering gussets with cut-outs for a 2x2 wood stud, or other if preferred.
- **Step 2:** The 2x2s, not provided by manufacturer, are fastened vertically to the wall at a specific distance parallel from one another and centered on the pilaster's final position; see **Figure 1a** below.
- **Step 3:** The pilaster is then pressed over the 2x2s; see **Figure 1b** below. An adhesive is recommended on the gussets where the 2x2s attach. Holes are countersunk along the edge of the pilaster for fasteners that attach the pilaster to the 2x2s. The fasteners should be positioned near the gussets to avoid warping when the fasteners are over-tightened.
- **Step 4:** The capital and base can be attached using an adhesive. If a mechanical fastener is necessary, holes can be countersunk in the capital and base for fasteners to attach to the pilaster. Another method for installing the capital and base is to put a 2x2 just at the top of the shaft against the wall. The capital is positioned and a fastener is put down through the flashing into the 2x2. The 2x2 can be pushed up about a 1/4" to help the water drain off. The base is positioned and a line drawn on the substrate. The base is removed and a 2x2 is fastened to the substrate back about 3/8" from the drawn line. Adhesive is applied to the 2x2 and the base is repositioned. A fastener can be used to attach the base to the 2x2; see **Figure 1b** below.



Type (2) installation (Quick):

- **Step 1:** Each pilaster has self-centering gussets and a steel frame. The steel frame that is pre-fitted to the pilaster is removed. This frame is now mounted to the wall in the final position of the pilaster; see **Figure 2a** below.
- **Step 2:** The pilaster is then pressed over the frame; see **Figure 2b** below. An adhesive is recommended on the gussets and edges where the steel frame touches. Holes are countersunk along the edge of the pilaster for fasteners that attach the

pilaster to the frame. The fasteners should be positioned near the gussets to avoid warping when the fasteners are over-tightened.

- **Step 3:** The capital and base can be attached using an adhesive. If a mechanical fastener is necessary, holes can be countersunk in the capital and base for fasteners to attach to the pilaster. Another method for installing the capital and base is to put a 2x2 just at the top of the shaft against the wall. The capital is positioned and a fastener is put down through the flashing into the 2x2. The 2x2 can be pushed up about a 1/4" to help the water drain off. The base is positioned and a line drawn on the substrate. The base is removed and a 2x2 is fastened to the substrate back about 3/8" from the drawn line. Adhesive is applied to the 2x2 and the base is repositioned. A fastener can be used to attach the base to the 2x2; see **Figure 2b** below.

